

# 2008

RE-DESIGNED

# Livestock Trailer C-Series

# MORITZ

INTERNATIONAL INC.

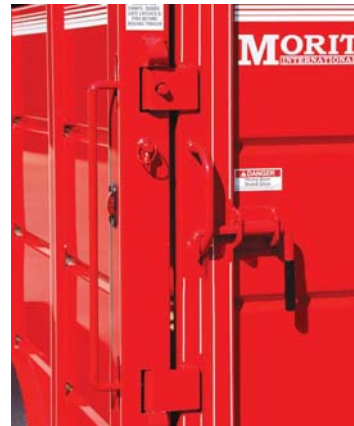
...Quality Trailers

## Standard Features

- Rugged, Better Looking Round Nose Design
- 7' Tall with Width Option of 6' or 6'8"
- LED Lighting
- Smooth Rolling Slider Gate
- Innovative Gate Latching System that includes Slam Latch on Divider Gate and Rear Gate as well as Simple, Easy-to-Use Side and Slider Door Latches
- Greaseable Door Hinges
- Stronger Corrugated Side Sheets
- Modern Sleek Looking Running Board Design



CBR 6-16



Rear Slam and Latch Design



Easy-to-Use Latch Design – Escape Door



New Running Board Design

## Why Buy a Moritz Stock Trailer?

- Superior Design, Workmanship and Overall Appearance
- LED Lighting/Molded-Sealed Wiring Harness
- 2 Year Limited Warranty (see warranty for details)
- Two Stage Phosphate Wash System with a Durable Catalyzed Paint System
- Low Maintenance Rubber Ride Suspension