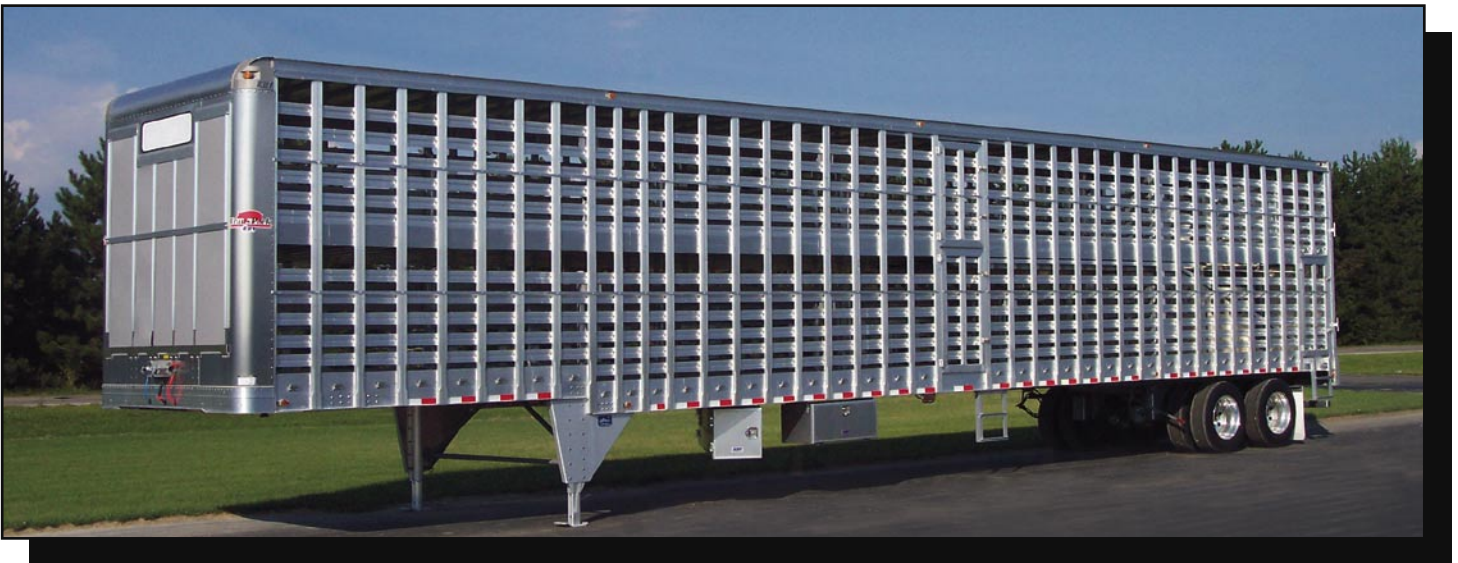


Trans Pork™

EBY Slat Side Trailer

Leadership in Swine Transportation Equipment



Featured: Drop Deck Slat Side, available in lengths to 53". Shown with popular Eby Trans Pork options: fully vented front-end with closure panels. Slide-in side winter closure panels with storage and other options not considered standard.

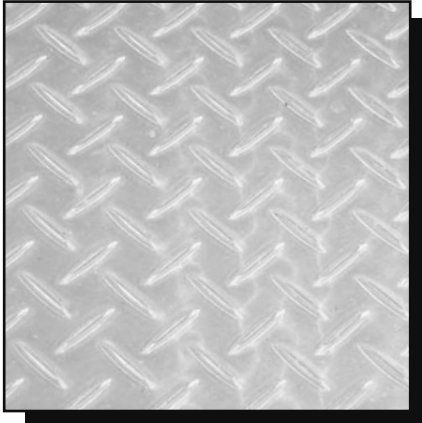


Superior ventilation- proven post and slat design provides maximum air flow with the most air openings in the industry! Size and location of openings can be placed as determined by your air and cargo requirements. All models feature slotted closure posts for future winter panel use.

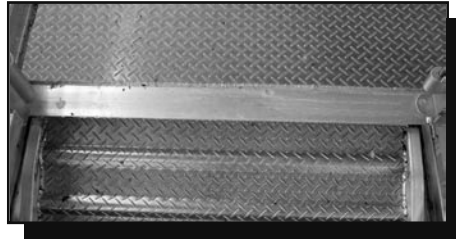
Slat Side Trans Pork Series features:

- Superior Flooring- featuring high button 6061 alloy diamond plate, providing superior traction for your cargo and extending floor life. Available in flat or ridged diamond plate.
- Excellent Washability- inside slat, outside post construction, tubular cross members and gates provide easy wash-out.
- Efficient Winter Closure- easy in and out system with extruded aluminum track closure posts are standard on the all Trans Pork series trailers.
- Easy Load Ramp- and folding chute sides. Rear 13' pull-out deck reduces stress on cargo. Corrugations on the ramp and the gentle incline are added features that users term "the most pig and driver friendly trailer available".

Impressive Standard Features And Available Options



- Floor. All Trans Pork series trailers feature high button 6061 alloy diamond plate for superior traction and durability.

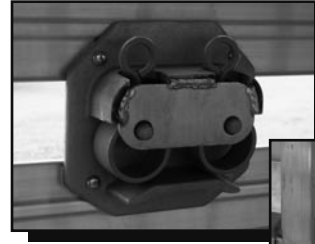


- No step ramp- with no step at the top deck. Pigs load more easily, reducing stress on your cargo and the driver.



- Tubular cross members. For added strength and easy wash-out.

- Positive latch western style gate latches provide secure fastening in the closed and open positions. Easy to use and maintain.



- Top latch

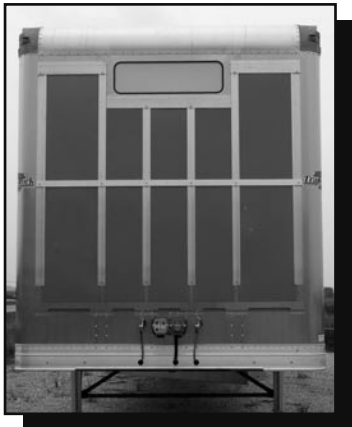


- Latch with hold back



- Bottom latch

Options:



- Fully ventilated front end shown with optional panels installed (lighted sign is optional).



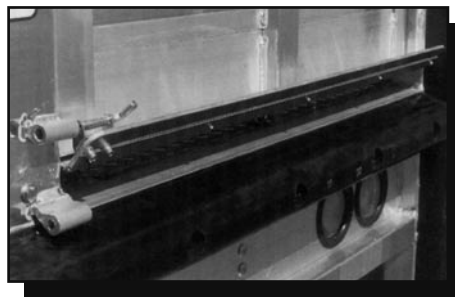
- Fully ventilated front end shown with panels removed (lighted sign is optional).



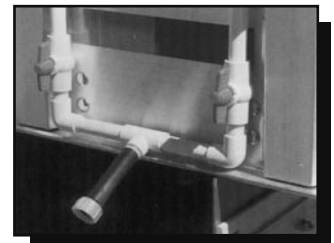
- Driver's side rear access door includes convenient fold-down step.



- Sliding roof hatch shown in closed position.



- Rear wash-out panel provides better curbside drainage; hinges down to prevent runoff when trailer is in use.



- Factory installed fogger system.



M.H. Eby, Inc.
1194 Main St.
P.O. Box 127
Blue Ball, PA 17506
800/292-4752 • 717/354-4971
Fax: 717/355-2114

M.H. Eby, Inc.
4435 Street Rt. 29
P.O. Box 137
West Jefferson, OH 43162
800/752-0507 • 614/879-6901
Fax: 614/879-6904

M.H. Eby, Inc.
1708 Eby Drive
P.O. Box 156
Story City, IA 50248
866/894-3297 • 515/733-5207
Fax: 515/733-5262